

# Third Party Printers – TPPServer (v1.1.2) release notes



## 1 Index

<b>1 Index</b>	<b>2</b>
<b>2 Introduction</b>	<b>3</b>
Copyright	3
History	3
<b>3 How to use</b>	<b>4</b>
<b>4 Roll-out information</b>	<b>4</b>
Pre-conditions	4
Installation procedure	5

## 2 Introduction

This document highlights the major changes in this software release. It is not a complete list of all bugfixes and features. Please contact for further assistance.

### Copyright

Copyright © by SPGPrints B.V.

All rights reserved worldwide. This publication and the software, shall not be copied, distributed, transmitted, transcribed or translated into any human or computer language, in any form or by any means, to any third parties, without the express written consent of SPGPrints B.V.

### History

Date	Description	Author
2023-04-11	Creation	Bas van Drunen

### 3 How to use

The supported printers are Rose and Jasmine.

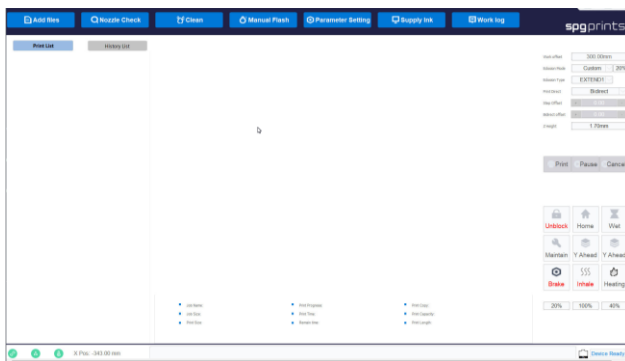
Connect to the printer using VNC, IP address must be 192.169.0.168, user connecting must be “SPG”.

The installer TPPServer will install:

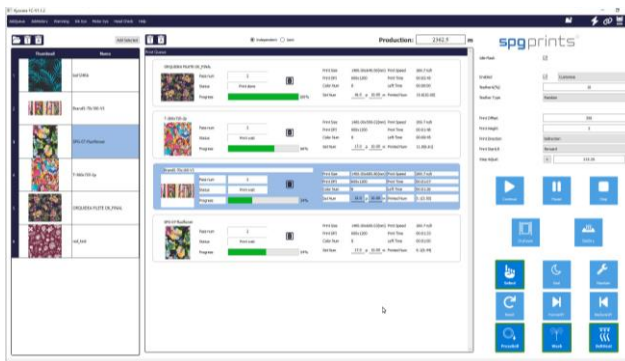
- The SPG Prints approved layout and,
- The SPG Prints logfile retriever software.

After installation, the SPG Prints approved layout is applied.

Screenshot for a Rose:



Screenshot for a Jasmine:



### 4 Roll-out information

#### Pre-conditions

##### For Rose

The computer name must be Rose-*nn*. (e.g. Rose-11)

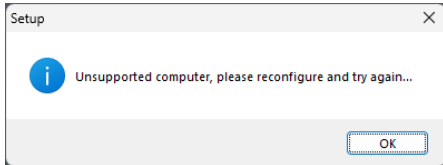
The printer software must be installed in the directory: “D:\SPG PrintExp\”

**For Jasmine**

The computer name must be Jasmine-nn. (e.g. Jasmine-12)

The printer software must be installed in the directory: “D:\SPG printer\”

If any of the preconditions are not met, the following message will appear and the installation will stop.



**Installation procedure**

Run the installer, “TPPServer\_Setup\_1.1.2.exe”, on the printer pc to install the log retriever software.

After starting the installer, User Access Control will ask to allow execution.

	<p>Select Yes to proceed.</p>
	<p>Click on Next to proceed.</p>
	<p>Finish</p>