

HOW TO INITIAL CONFIGURATION OF NORDAC PRO SK 550P



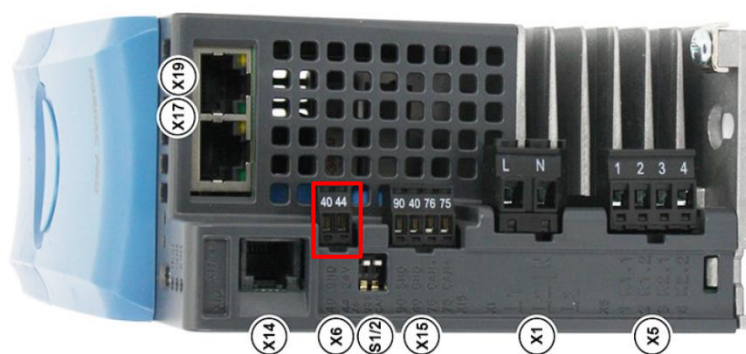
REQUIREMENTS

- Mounted FU (For more info see also in the manual “How to replace SKCU5-STO Modul”)
- PC with installed NORDCON software
- USB-C cable (SK CE-USB-C-PC-USB-3m)
OR
Modbus-Adapter with RJ12 plug (SK_TIE4_RS232_USB)

INITIAL THE CONFIGURATION

Please follow step by step to initial the configuration of NORDAC PRO SK 550P.

1. POWER ON FREQUENCY CONVERTER



On X6 connect 24 V.
40: GND
41: 24 V

2. ESTABLISH CONNECTION

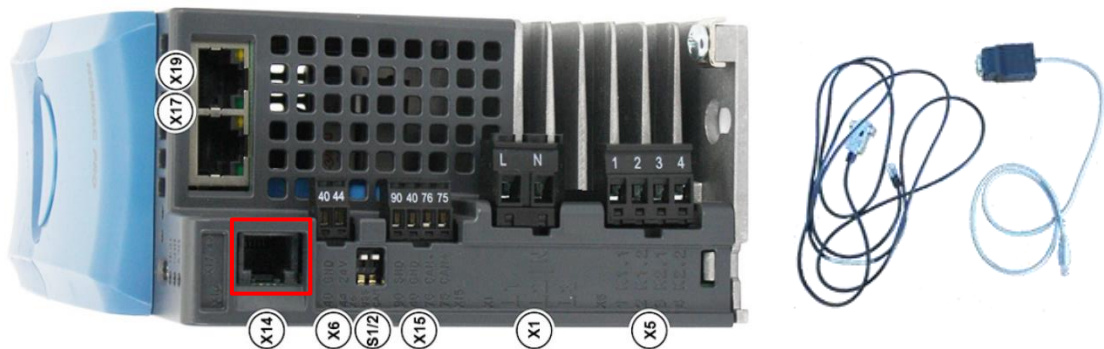
The connection from the frequency converter to the PC can be established either via USB **OR** Modbus.

USB CONNECTION



- connect the USB-C connector to the marked communication interface X16
- connect the USB with the PC.

MODBUS CONNECTION



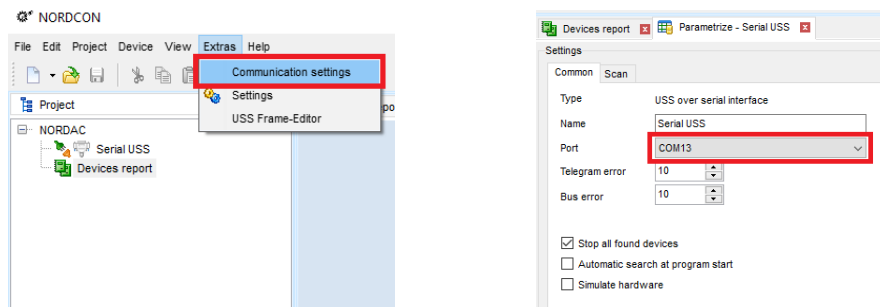
- connect the RJ12 connector to the marked communication interface X14
- connect the USB with the PC.

3. START "NORDCON" SOFTWARE



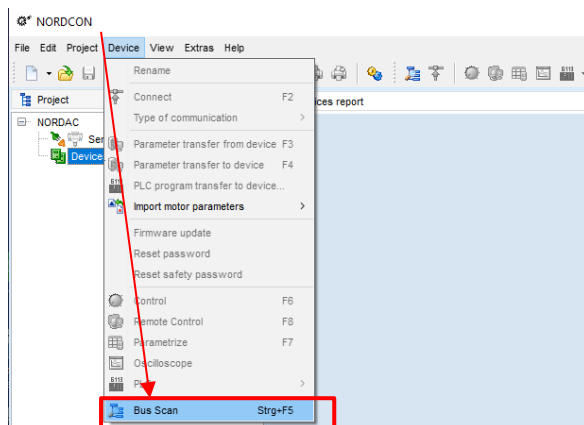
4. COMMUNICATION SETTINGS

- Click on "*Communication settings*" under Extras to setup connection
- Select the desired port in the combo box "*Port*" (information about available com ports see "Device Manager")



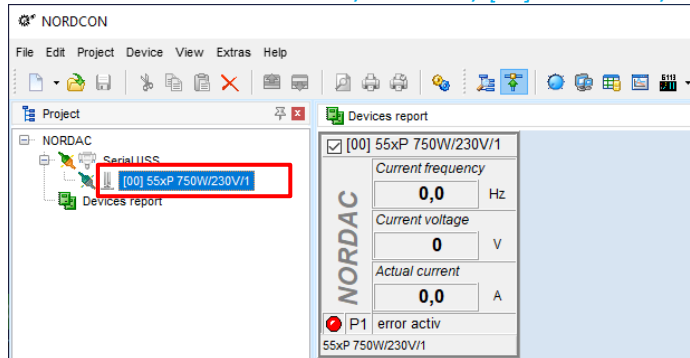
5. SEARCH CONNECTED DEVICES (BUS SCAN)

- Click on "*Bus scan*" under Device to connect the Device

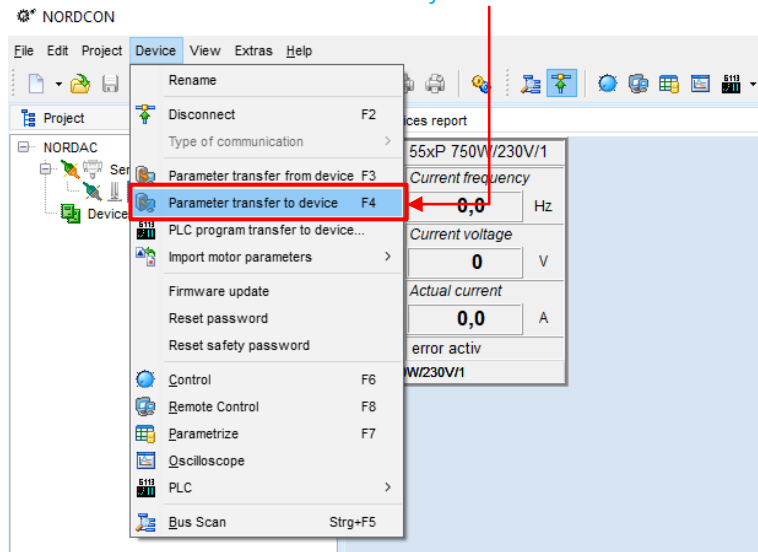


6. PARAMETER TRANSFER TO DEVICE

- Select in the device list *NORDAC/Serial USS/[00] 55xP 750W/230V/1*



- Choose under **Device** "*Parameter transfer to device*"



- In the File Open dialog choose the "ASPEN_LEX80x3_NordAC_550P.ndbx" file. The transferring process starts automatically. Please wait until the transferring process is successfully finished

